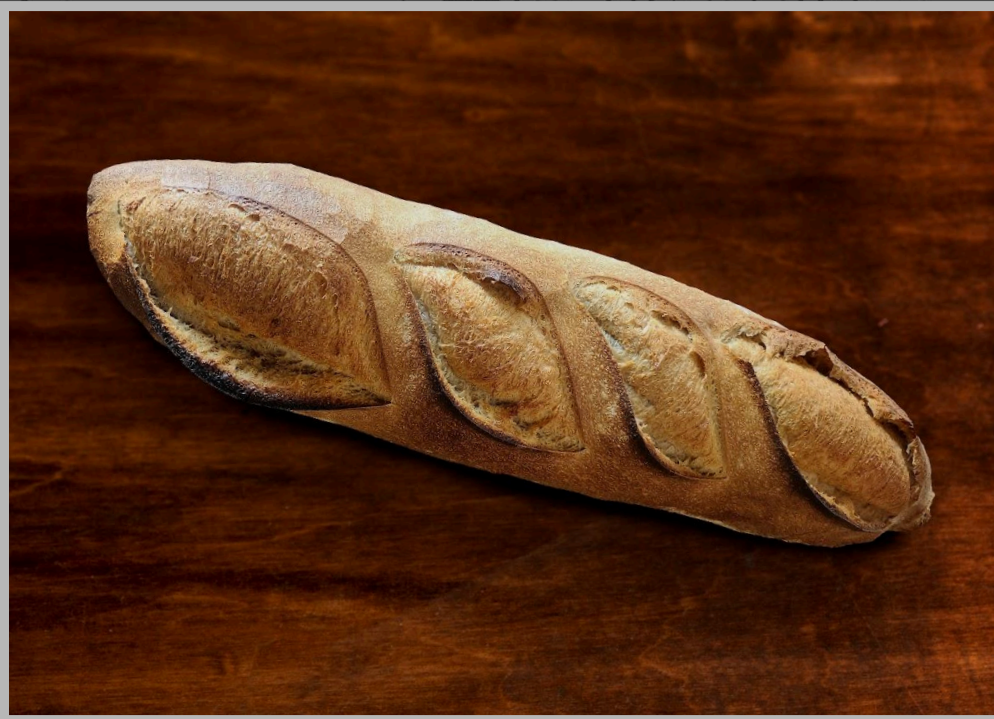


NISI'S

CRAFT BAKERY

CRAFTED IN CALIFORNIA

#0816 LEVAIN LOAF 21" x 6" - 44 oz



Our handmade Levain loaves are born from our 100-plus-year-old sourdough starter.

- 100-plus-year-old Gold Rush™ mother dough starter
- Classic French hand-shaped levain loaf
- Ideal as an upscale, hand-cut table bread, great for avocado toast
- Crispy, robust crust, delicate, airy, light interior
- No preservatives - no conditioners - no additives
- Shipped frozen, thaw and serve unsliced
- Baked in our Napa bakery
- Central Milling rye and wheat flours added for a rich bread experience

INGREDIENTS: Whole wheat flour, dark rye flour, salt, water, and sourdough starter.

CONTAINS: Wheat

STORAGE AND HANDLING: Keep in the freezer for 12 months in original packaging, or thaw and hold at room temperature for 3 days.

SKU: LOAFLEVAIN

GTIN: 00850061543301

NET CASE WEIGHT: 15.5 lbs; GROSS CASE WEIGHT: 18.2 lbs

CASE DIMENSIONS: 24" x 14" x 10"

PACK/SIZE: 6/44 oz loaves

PALLET/TiHi: 35 Cases, 5 per layer/7 layers

SALES@NISISCRAFTBAKERY.COM — VISIT NISISCRAFTBAKERY.COM

MANUFACTURED BY NISI'S CRAFT BAKERY - NAPA, CA

Updated, 2025-04-16

